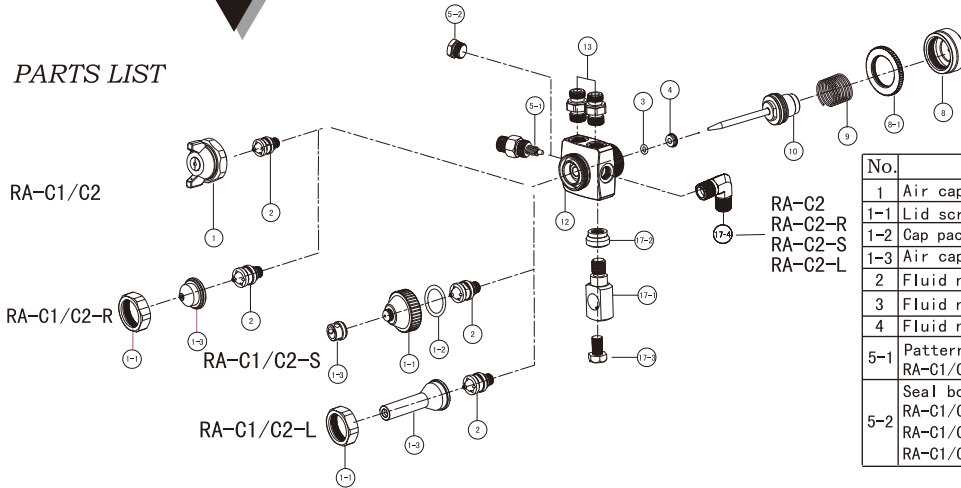


PARTS LIST



No.	Description	Q'ty	No.	Description	Q'ty
1	Air cap set	1	8	Fluid adjusting knob	1
1-1	Lid screw	1	8-1	Fluid fixed screw	1
1-2	Cap packing	1	9	Fluid needle spring	1
1-3	Air cap	1	10	Fluid needle set	1
2	Fluid nozzle	1	12	Gun body	1
3	Fluid needle packing	1	13	Air connector/Fluid connector	2
4	Fluid needle packing screw	1	17-1	Holder	1
5-1	Pattern adjusting set RA-C1/C2	1	17-2	Holder fixed screw	1
5-2	Seal bolt RA-C1/C2-R RA-C1/C2-S RA-C1/C2-L	1	17-3	Holder bolt	1
			17-4	Elbow pipe RA-C2 RA-C2-R RA-C2-S RA-C2-L	1

Prior to operation read the operating instructions carefully.

OPERATION

Model RA-C1 and RA-C2 are basically the same in structure. But there is only one air inlet with RA-C1 while there are two air inlet with RA-C2. Mount the automatic spray gun on the automatic painting equipment, reciprocator or painting robot for the application of coating, cooling, humidifying, disinfecting, release agent, adhesive, etc.

The AUTOMATIC SPRAY GUN has been designed as an AIR OPERATED TOOL, and in the interests of safety must only be used for the purpose for which it has been designed. The tool should on no account be used for any other purpose for whatever reason, this could result in danger to the operator and those within the immediate working area.

I, I, L-Trichloroethane and Methylene Chloride can chemically react with aluminium used in automatic spray guns possibly causing an explosion. If in doubt consult the material supplier.

ADJUSTMENT

- a) Fluid Supply
Fluid is provided by gravity container or by pressure tank. Recommended air pressure in pressure tank is around 0.2-1 kgf/cm². Nozzle drips when air pressure is too high, even though the gun is not being used.
- b) Air Supply
Recommended air pressure is 3-4 kgf/cm². Apply high pressure for spraying high viscosity fluid and low pressure for low viscosity fluid. Fluid needle set will not move if air pressure is less than 2 kgf/cm².
- c) Fluid Output
Turn the fluid adjusting knob to the left to increase fluid output and to the right to reduce fluid output. Spray pattern can be adjusted to fan or round by turning pattern adj. valve set to the left or to the right.

SAFETY

- a. Never allow untrained or unauthorized persons to operate this automatic spray gun.
- b. Never use matches, smoke or operate the gun in the vicinity of a naked flame.
- c. Never exceed the recommended air pressure.
- d. Use only original spare parts.
- e. The use of breathing mask and sound absorber are recommended at all times when spraying.

SERVICING

- a. Ensure the material and air supply are disconnected before effecting any work on the Automatic Spray Gun.
- b. Clean air cap, fluid nozzle and fluid needle with brush. Clogged air holes should never be cleaned with a metal instrument.
- c. Flush the gun with thinners after each operation.
- d. Do not submerge the whole automatic spray gun in solvent.

TROUBLE-SHOOTING

- a. When gun drips from fluid nozzle, check if fluid needle packing is damaged if fluid nozzle and fluid needle are dirty. Clean or replace parts.
- b. When fluid leaks from tip of air cap, check if nozzle is loose, and if o ring is worn or damaged. Tighten fluid nozzle, or clean and lubricate o ring or replace o ring.
- c. When fluid needle is sluggish, check if fluid nozzle and fluid needle are dirty. Clean or lubricate or replace parts.
- d. When spray pattern is abnormal, check if fluid builds up on air cap or if fluid nozzle is loose or damaged. Clean air cap or tighten fluid nozzle or replace parts.
- e. When only air emits and no fluid comes out, check if fluid adjusting knob is completely closed.

